



2/2-way valve with isolating diaphragm for medium up to +100°C

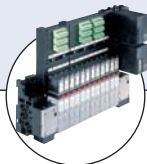
- Normally closed or open
- Body material: Brass, Stainless steel
- Double spindle seal
- Compact design

Type 0263 can be combined with...



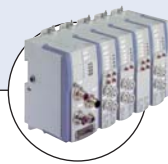
Type 6012/6014P

Pilot valve



Type 8640/8644

Valve Block



Type 8645

Valve Block



Type 8311

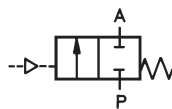
Pressure Sensor/Switch

The externally controlled valve is pneumatically operated. It consists of a diaphragm actuator and a 2-way valve body. Between the valve housing and the drive, there is a hermetically sealed membrane.

The diaphragm actuator moves a spindle with valve disc against a spring and switches the valve. The spindle is designed glandless with double seal. The actuator body is made out of epoxy resin.

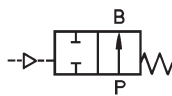
Circuit function A

2/2-way valve, externally controlled, normally closed by spring operation with pilot valve



Circuit Function B

2/2-way valve, externally controlled, normally opened by spring, operation with pilot valve

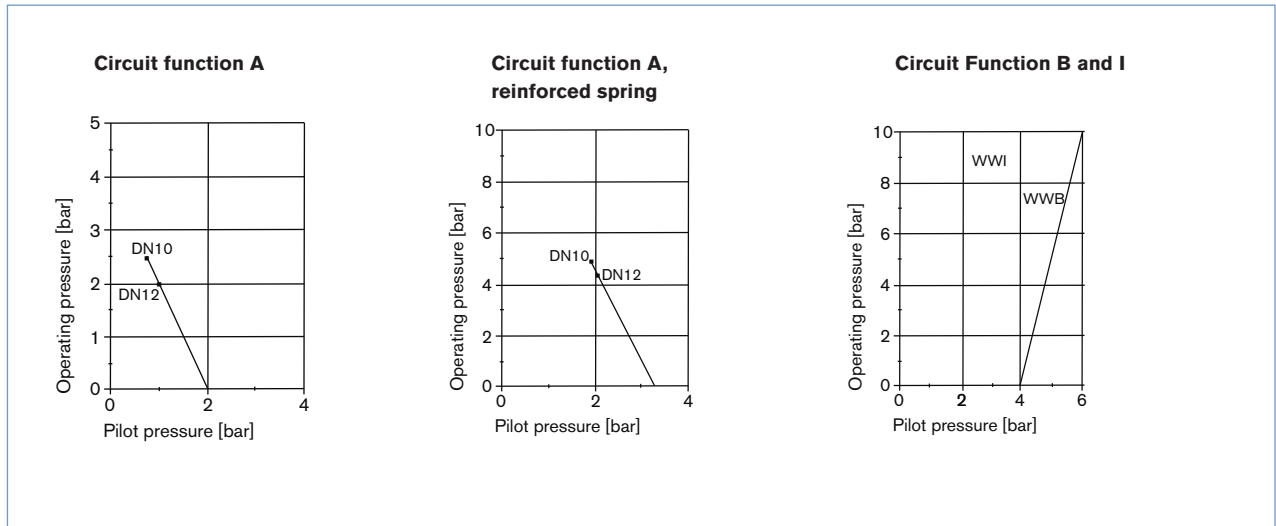


| Technical data | |
|-------------------------------------|--|
| Body material | Brass, stainless steel |
| Inner part valve | Stainless steel |
| Actuator | Epoxy resin |
| Seal material | NBR, FKM, EPDM, |
| Medium | |
| NBR | neutral medium (e.g. compressed air, town gas, water, hydraulic oil) |
| FKM | per-solution, oxygen, hot air |
| EPDM | oil and fat-free medium e.g. hot water, alkaline washing and bleaching lyes |
| Viscosity | max. 100 mm ² /s |
| Medium temperature | |
| NBR | -10 up to +90 °C |
| FKM | -10 up to +100 °C |
| EPDM | -10 up to +100 °C |
| Control medium | neutral gases and liquids, in particular air, water, hydraulic liquids up to max. +90 °C |
| Pilot pressure | see diagram |
| Ambient temperature | -10 up to +90 °C |
| Installation | As required, preferably with actuator upright |
| Flow rate | |
| Kv value water [m ³ /h]: | measured at +20°C, 1 bar pressure at valve inlet and free outlet |
| Pressure values [bar] | Measured as overpressure to the atmospheric pressure |

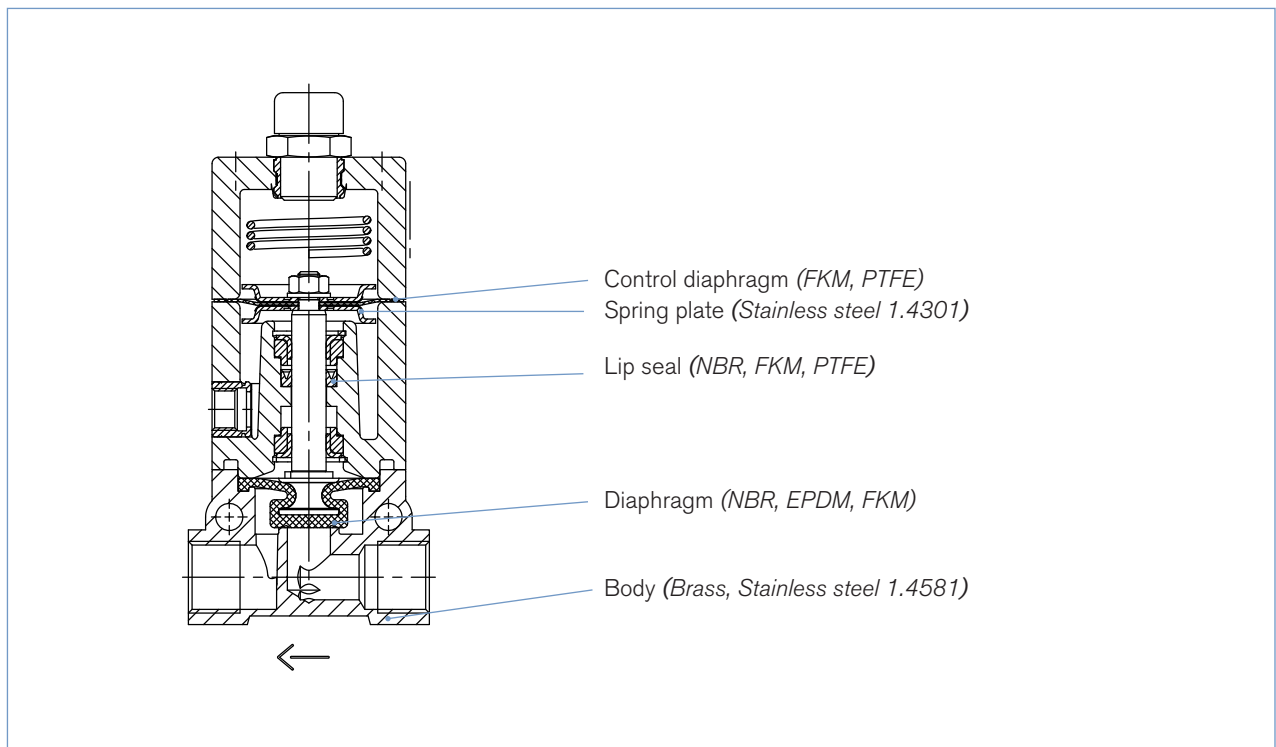
Technical data *continued*

| Orifice [mm] | Kv value water [m³/h] | Port connection | Pressure range of circuit function | | | Weight [kg] |
|--------------|-----------------------|-----------------|------------------------------------|---------------------------|-----------------------------|-------------|
| | | | A normal spring [bar] | A reinforced spring [bar] | B and I normal spring [bar] | |
| 10 | 1.0 | G 3/8 | 0 - 2.5 | 0 - 5 | 0 - 10 | 0.5 |
| 12 | 2.1 | G 1/2 | 0 - 2 | 0 - 4.5 | 0 - 10 | 0.6 |

Operating pressure chart - pilot pressure



Material

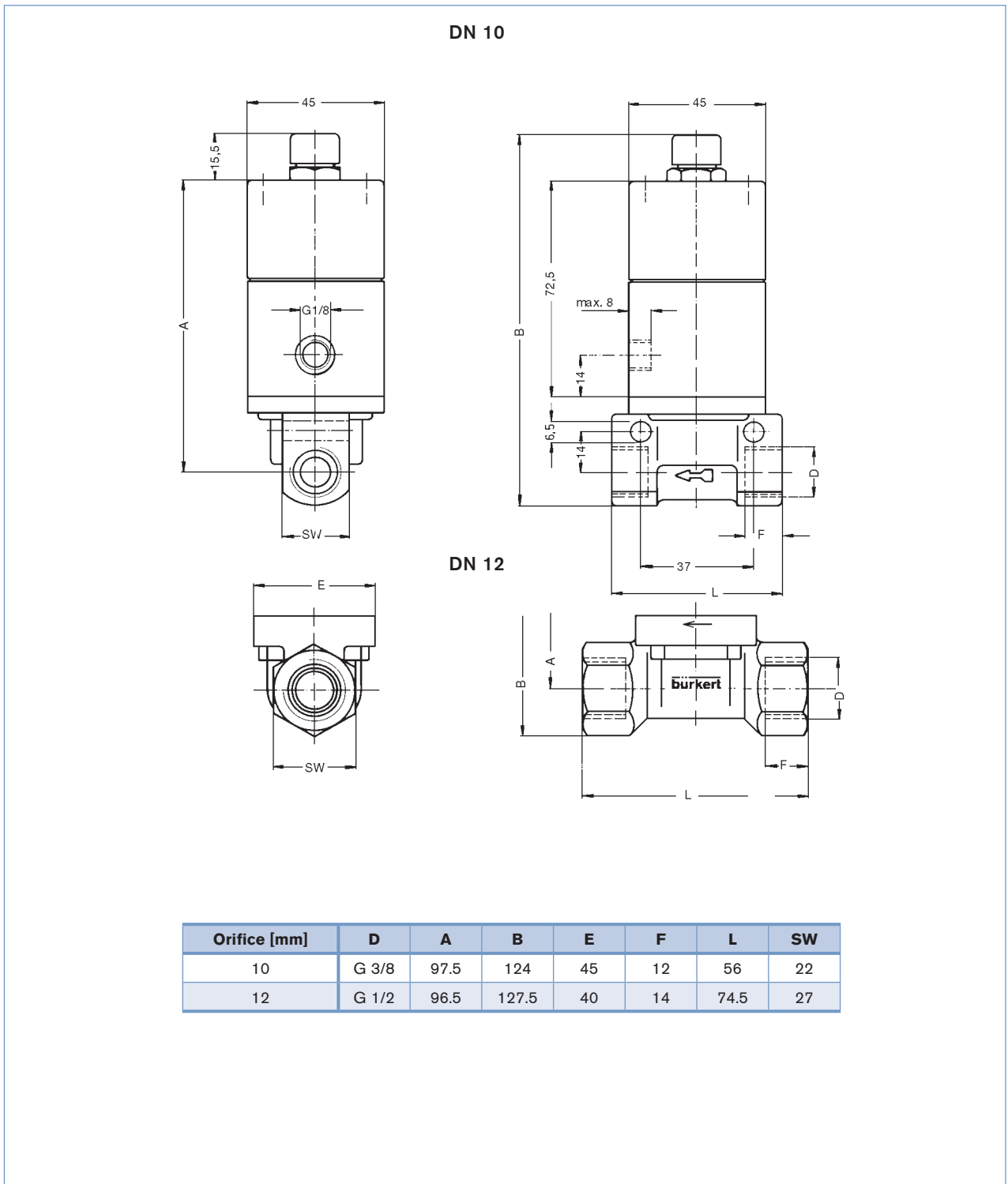


Ordering chart for valves (other versions on request)

Valves with threaded port connection

| Circuit function | Orifice [mm] | Port connection | Kv value water [m ³ /h] | Spring | Pressure range [bar] | Seal material | Item no. |
|-----------------------------|--------------|-----------------|------------------------------------|------------|----------------------|---------------|----------|
| Brass body | | | | | | | |
| A | 10 | G 3/8 | 1.0 | normal | 0-2.5 | FKM | 027 963 |
| | | | | | | NBR | 027 342 |
| | | | | reinforced | 0-5 | EPDM | 027 929 |
| | | | | | | FKM | 026 903 |
| | 12 | G 1/2 | 2.1 | normal | 0-2 | NBR | 026 065 |
| | | | | | | EPDM | 026 094 |
| | | | | reinforced | 0-4.5 | FKM | 026 246 |
| | | | | | | NBR | 026 207 |
| B | 10 | G 3/8 | 1.0 | normal | 0-10 | EPDM | 028 023 |
| | | | | | | FKM | 027 695 |
| | | | | | | NBR | 027 881 |
| | | | | | | NBR | 028 980 |
| | 12 | G 1/2 | 2.1 | normal | 0-10 | FKM | 028 037 |
| | | | | | | NBR | 026 455 |
| | | | | | | EPDM | 027 987 |
| | | | | | | NBR | 027 962 |
| A | 12 | G 1/2 | 2.1 | reinforced | 0-4.5 | EPDM | 028 827 |
| | | | | | | FKM | 027 962 |
| | | | | | | NBR | 027 962 |
| Stainless steel body | | | | | | | |
| A | 12 | G 1/2 | 2.1 | reinforced | 0-4.5 | EPDM | 027 428 |
| | | | | | | FKM | 026 944 |
| | | | | | | NBR | 027 328 |

Dimensions [mm]



To find your nearest Bürkert facility, click on the orange box →

www.burkert.com